

## Floodlights Projektörler

### Cruzo



Designed for sport and wide areas lighting

10kV internal surge protection

IP67 Dust and Waterproof Driver

100.000h Driver Life time

30° / 60° / 90° / Asymmetric Lens

Spor sahaları ve geniş alan aydınlatması için tasarlandı

10kV dahili parafudr

IP67 Toz ve Su Almaz Driver

100.000h Driver ömrü

30° / 60° / 90° / Asymmetric Lens

#### Mechanical Specifications Mekanik Özellikler

Body	Gövde	Aluminium	Aluminyum
IP Rating	IP Sınıfı	IP66	
IK Rating	IK Gövde Sınıfı	IK10	
Fire Protection	Alev Koruması	650°C	
Cable Gland	Kablo Rakor	Metal	
Cable	Kablo	3x1,5mm <sup>2</sup>	
RAL Code	Ral Kodu	7043	
Mounting Type	Montaj Tipi	Pole/Ground	
		Direk / Zemin	

#### Optical Specifications Optik Özellikler

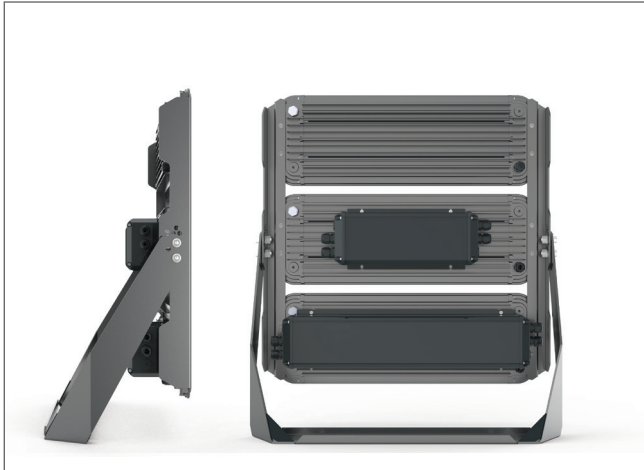
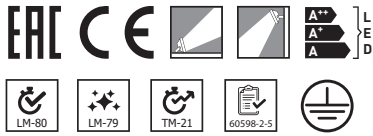
Light Source	Işık Kaynağı	Power LED	
Reflector	Reflektör	-	
Lens	Lens	PMMA	
Diffuser	Difüzör	Tempered Glass	Temperli Cam
CRI		>70	
Colour Temperature	Renk Sıcaklığı	4000K - 5700K - 6500K	
Photobiological Risk Group	Fotobiyolojik Risk Grubu	RG1	
Beam Angle	Işık Açısı	30° / 60° / 90° / Asymmetric	

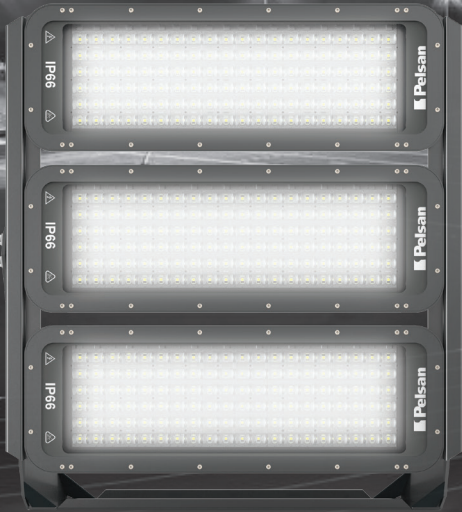
#### Electrical Specifications Elektriksel Özellikler

Input Voltage	Giriş Gerilimi	220-240Vac
Frequency	Frekans	50-60Hz
Class	Sınıf	I
System Lifetime	Sistem Ömrü	>100.000h
Power Factor	Güç Faktörü	>0,95
Operating Temperature	Çalışma Sıcaklığı	-20°C / 45°C
Standards	Standartlar	60598-2-5, LM79, EN 13032, LM80, EN 62262, EN 60529

#### Options Opsiyonlar

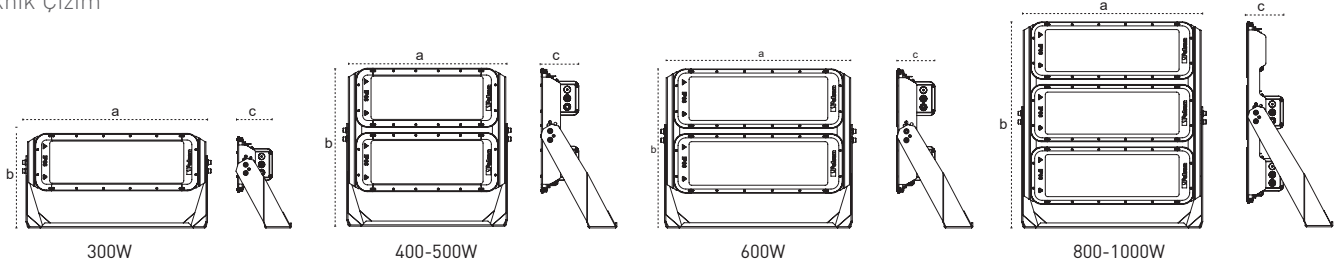
DALI		✓
1-10V		✓
Step DIM		✓
1hour Emergency Kit	1 Saat Acil Kit	-
3hour Emergency Kit	3 Saat Acil Kit	-
Electrical Protection	Elektriksel Sınıf	I/II
Microwave Sensor	Radar Sensör	-





## Technical Drawing

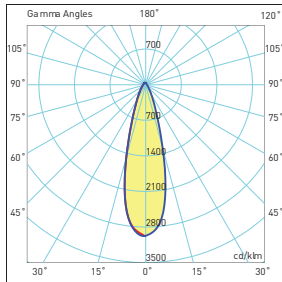
Teknik Çizim



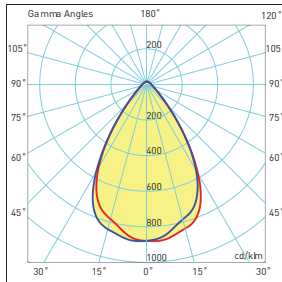
## Light Distribution Curve

Işık Şiddeti Dağılım Eğrisi

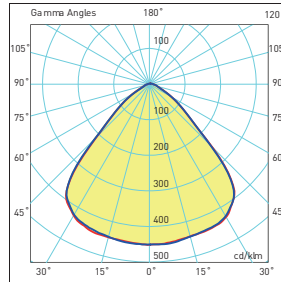
### 30° Lens



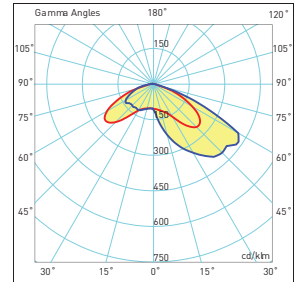
### 60° Lens




### 90° Lens



### Asymmetric / Asimetrik



180.00 .0 270.0 90.0  $\eta$ :1000 0 %

Code No Ürün Kodu	Power Güç (W)	Luminous Flux Işık Akısı (lm)	Colour Temp. Renk Sıcaklığı (K)	Efficacy Etkinlik Faktörü (lm/W)	Dimensions Boyutlar (mm) a x b x c	Pcs / Pack Koli Adedi		Package Vol. Koli Hacmi (m³)	Package Weight Koli Ağırlığı (kg)
110791	300	42300	5700	141	712x377x226	1	0,165m²	0,007	15
110792	400	58000	5700	145	612x613x294	1	0,293m²	0,096	25
110793	500	71000	5700	142	612x613x294	1	0,293m²	0,096	25
110794	600	84600	5700	141	712x613x294	1	0,341m²	0,112	32
110795	800	115200	5700	144	712x824x345	1	0,519m²	0,147	45
110796	900	126900	5700	141	712x824x345	1	0,519m²	0,147	45
110797	1000	139000	5700	139	712x824x345	1	0,519m²	0,147	45

Products codes refer to 5700K and standard products. So, it can be different for options.  
Product technical values can be changed  $\pm 7\%$  at different working conditions.  
Ürün kodları 5700K standart ürün içindir, farklı CCT ve opsiyonlar için değişebilir.  
Ürün bilgileri farklı çalışma koşullarında  $\pm 7\%$  değişiklik gösterebilir.

Visit our website for latest product informations and documents.  
Güncel ürün bilgi ve belgeleri için web sitemizi ziyaret ediniz.

